

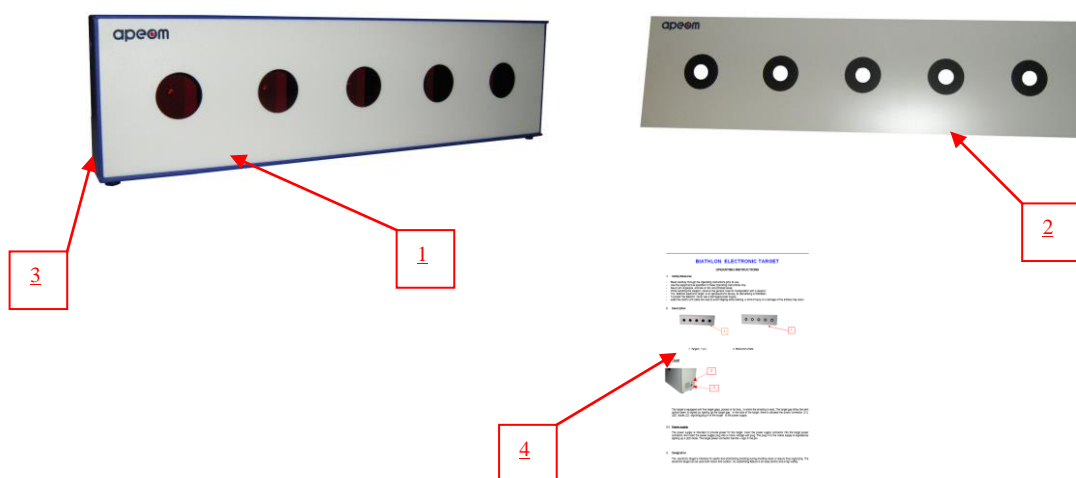
DETECTOR BUDDY

USER MANUAL

1. Safety Measures

- Read carefully through the Operating Instructions prior to use.
- Use the equipment as specified in these Operating Instructions only.
- Never aim at people, animals or into uncontrolled areas.
- While handling the weapon, observe the general rules for manipulation with a weapon.
- The Buddy Biathlon hit detector is an optoelectronic device, its dismantling is forbidden.
- To power the detector, never use a damaged power supply.
- Lead the control unit cable the way to avoid tripping while walking. A kind of injury or a damage of the articles may occur.

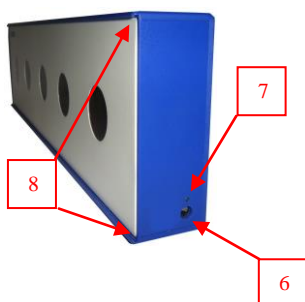
2. Description



1. Detector
3. Reduction plate

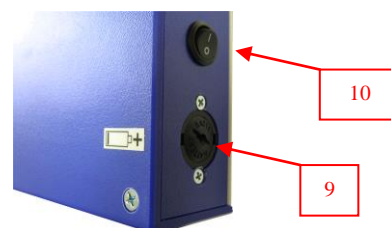
2. Power Supply or batteries
4. User manual

2.1 Detector



The Buddy detector is equipped with five target holes with a diameter of 35 mm. The hit of the target hole transmitted by the optical beam is signalled by the illumination of a LED inside the target hole.

On the side of the detector is the power connector (6), the LED (7) indicating the connection of the detector to the power supply. The grooves (8) are used to slide the reduction plate, with holes of 15 mm in diameter, for lying down.



2.2 Power supply

If your Buddy target comes with batteries, there is no need for any external power supply. But if you would like to use the power supply instead of the batteries, make sure the power supply is at least 9V/1A .

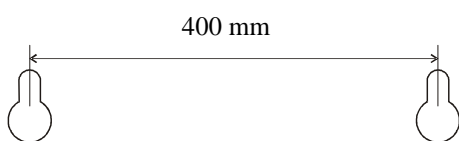
The power supply is intended to provide power for the detector. Insert the power supply connector into the detector power connector and insert the power supply plug into a mains voltage wall plug. The plug in to the mains supply is signalled by lighting up a LED diode. The detector power connector has the + sign in the pin.

The power supply is not included in the delivery.

3. Intended usage

The electronic detector is intended for sports and entertaining shooting during shooting races or leisure time organizing. The electronic detector can be used both indoor and outdoor. Its outstanding feature is an easy control and a high safety.

4. Detector preparation



If you would like to hang the detector on a wall, you can do it simply by using anything that sticks from the wall (nails, screws) that are distant from each other 400 mm.

If your Buddy target is equipped with a tripod console, you can mount it safely on any standard photo tripod.

5. Operating principles

Never aim at people, animals or uncontrolled areas – observing the general rules for manipulation with a weapon, as it was a live gun, is required.

Place the detector the way to avoid optical beam reflection from the base (table, etc.), i.e. at a front side.

A valid hit is signalled by lighting up the target gap. A target gap blinking is caused by interference of surrounding light or devices radiating electromagnetic waves.

The hit target gap reset is effected automatically, in case that there is not detected a new hit within approx. 40 seconds from the last hit (depending on the current software). If the shooter hits the target gaps with time lag longer then 15 seconds, the hits will be reset automatically during his shooting.

6. Maintenance

Keep the device clean by wiping the dust off of them using a dry rag. Do not use cleaning agents, solvents and chemical preparations. Do not use the power supply if its case, plug, connector or connector conductor are damaged.

7. Possible defects and their removal

The detector does not scan the hits

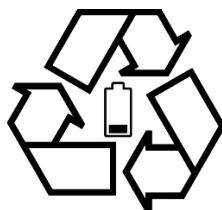
Verify if the power supply is plugged in and if the green pilot light is lighting up, or, if the green pilot light is not lighting, verify if the power supply is plugged in to a mains voltage wall plug, or change the power supply, or if the green pilot light is lighting up and the hits are not being scanned, request a service.

Finding other defects

Request a service.

8. Environmental protection

The batteries must not be dumped into a dustbin, hand them over at collection points.



9. Technical parameters

<i>Parameter name</i>	<i>Value</i>
Recommended shooting distance	10 m
Number of target holes	5
Power supply	4,5V (3x 1,5V AA) or power supply 9 V DC / 1 A
Length of operation	up to 200 hours (depending on the type of batteries used)
Target range resetting (hits reset)	Automatically (after approx.. 5 seconds from finishing shooting), or after approx.. 40 seconds from the last shot. (all depends on the software)
Dimensions	440 x 120 x 45 mm
Weight	0,95 kg
Operating temperature	-5°C to +40°C

10. Other provisions

The detector is equipped with a production label and a seal sticker.

